

SPECIAL SUPPLEMENT FROM BOSTON HOME

**Boston | 2009**

# CONCEPT HOME



Photography by Kent Dayton

# The Project

What happens when you let loose one of Boston's most exciting architecture firms on a sun-splashed 3,200+ square-foot penthouse? That's what *Boston Home* wanted to find out. With furniture from the city's top design sources, architect David Hacin's team created a sensuous and inventive space. What follows is high-low design at its best—like the over-the-top Swarovski crystal chandelier from Lucia Lighting & Design glittering above an outrageous vintage moose head unearthed from the deepest recesses of Machine Age—truly an iconic solution for our time.

*Boston Home* had a secret agenda, too: We hoped that by introducing Hacin's avant-garde aesthetic to local talents, we'd get unexpected magic. It worked: See the incredible bench made by 60 Nobscot using a wood slab and salvaged legs.

*Welcome to our Concept Home 2009!*

**-Rachel Levitt**

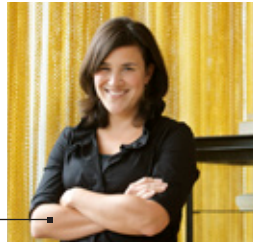


# The Team

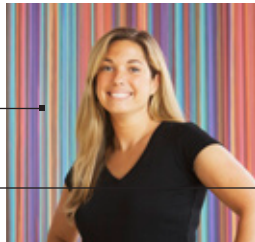
**David Hacin**  
AIA, Principal



**Kate Kelley**  
Interior Design  
Director



**Jennifer Clapp**  
Interior Designer



**Christine Rankin**  
Interior Designer



**Eduardo Serrate**  
Architectural  
Designer



**Nicole Fichera**  
Design Intern



## Boston 2009 CONCEPT HOME

**President**  
Randy Hano

**Publisher**  
Paul J. Reulbach

**Publisher-Branded Publications**  
Demea Gambulos

**MARKETING**  
**Senior Marketing Manager**  
Robin Ruttle

**Marketing Manager**  
Jessica Sousa

**Marketing Specialist**  
Caitlin Domke

**Marketing Art Director**  
Andrew Long

**Home Design Editor**  
Rachel Levitt

**Photographer**  
Kent Dayton

**Interior Design Team**  
Hacin + Associates

**ADVERTISING**  
**National Account Executive**  
Emily Walk Geller, Joseph Holladay

**Senior Account Executive**  
Tracy Hess

**Account Executives**  
Reagan Driscoll,  
Danielle Duane, Susan Farkas,  
Kristina Lynch, Michael Rodriguez

**Marketplace Account Executive**  
Danielle Demaniuk

**Executive Assistant**  
Jacqueline Birr

**Advertising Assistant**  
Alexandra Kelley

**PRODUCTION**  
**Production Director**  
Jennifer Glynn

**Pre-Press Supervisor**  
Barbara Brennan

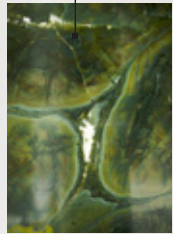
Boston magazine, 300 Massachusetts Avenue, Boston, MA 02115; 617.262.9700. A division of METROCORP™, 1818 Market Street, Philadelphia, PA 19103; 215.564.7700. D. Herbert Lipson, Chairman; David H. Lipson Jr., President; Frederick B. Waechter Jr., Chief Operating Officer; Marian Hettel-Conicella, Vice President.

**On The Cover:** Landscape by Winston Flowers; vintage pool furniture from Machine Age; pillows by Finelines; Luau lighting from Vessel.









The same Ocean Fern stone from GerrityStone's Platinum Collection that was used as a back splash in the kitchen becomes high art in the dining room.

Facet dining room chairs are by Ligne Roset.

Vintage glass and Lucite table is available at Reside.

Decorative vintage signage was found at Reside.

## Dining Room & Kitchen

When designing their houses, most people don't start from scratch; the pieces they come with present the most interesting challenges to the creative team. In that spirit, Hacin's group decided to blend genres to get the perfect play list—working surprises into the mix—just like a real project. White French leather chairs and a glass-top table are the ideal foil for an intricately flowered porcelain chandelier (grandma's, perhaps?) and 1950s signage letters (which could have been a Brimfield impulse buy...). We especially love the "live edge" of the stone slab hung on the back wall—in design parlance, it really gives the space "punch."

“ We wanted to delve deep into people’s inventory... to search out the dusty and forgotten... We were plodding through the basement of *Reside in Cambridge* when Christine spotted a dark closet filled to the brim with shelving. Next thing I knew, we were knee-deep in cardboard palettes covered with vintage signage from an old factory. We brought them to the space, drew out some grid lines on the wall, and installed them as-is... covered in grime and yellowed with half a century’s worth of patina. ”

-Jennifer Clapp



Teroforma tableware is available through Lekker Home Furnishings.



The pendants by Lucia Lighting & Design mirror the ripplefold drapery by Finelines.

The island countertop, designed by Eduardo Serate of Hacin + Associates and Hernan Castillo of GerrityStone, was custom-formed to serve as a drainage board.

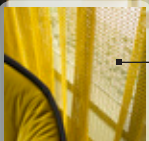
A bold barracuda, found at Machine Age, perches atop the kitchen cabinets.

A Metropolitan white porcelain chandelier, available from Lucia Lighting & Design, creates a focal point.

The countertop is 1 1/4-inch thick White Zeus Silestone by Cosentino, found in GerrityStone’s Zen collection.

Finelines reupholstered this vintage stool from Machine Age in Missoni fabric.





Finelines crafted ripplefold drapery using Donghia fabric, available at the Boston Design Center.

The Moël armchair is from Ligne Roset.

The designers' own objets d'art and thrift shop finds painted white fill an antique medicine cabinet from Machine Age.

## Living Room

Sensuous, curvaceous pieces like this disco-era sofa coupled with a salt-and-pepper shag rug beckon bare feet, flirty dresses, and philosophical rants (with a smile), while balancing the great expanse of angular glass. And grandpa's old tube radio never looked better on the floor next to the world's most inviting armchair. On our covet list: the antique metal cabinet that appears as if it might just start walking around the room.

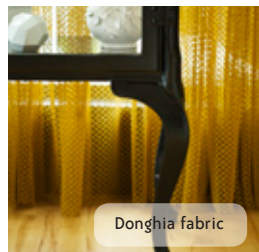
A show-stopping 1975 Vladimir Kagan sofa for Directional, available at Machine Age, is accented by a pillow in Missoni fabric and a whimsical ant pillow from Vessel.

Three chrome-and-glass coffee tables from Reside allow more design flexibility than a single, large table, and complement this shag rug from Dover Rug.

A white pouf from the Morson Collection, like the coffee tables, can be moved to create new seating arrangements as needed.



Missoni fabric



Donghia fabric

“ While pulling the space together, we listened to a lot of David's old eight-tracks, and I think you can sense that in the space. We conjured a time when things were more tactile and real—music was on a tape, photographs were on film, and things were made locally. Analog chic! ”

-Jennifer Clapp

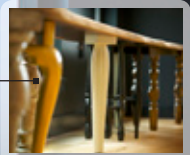






ColorTHEORY painted both walls and trim with black Farrow + Ball paint.

The John Guthrie acrylic painting from his "Drips" series was curated by James Hull.



This bench was a collaboration between Hacin + Associates and 60 Nobscot.

## The Lounge

Black presents the decisive setting for a signature piece like this unique custom handmade bench and slick painting by local artist John Guthrie. Of course, it wouldn't be complete without our own version of the Venus de Milo, an extraordinary vintage sculpture unearthed by Kate Kelley.

Cristi Rinklin's painting "After the End of the Beginning" was also curated by James Hull.

EcoSmart's freestanding Switch fireplace is ventless and burns on ethanol; it's available through EcoModern.



“ We met 60 Nobscot's Ray Bachand at his Sudbury workshop and found this 14-foot long piece of walnut leaning against the eaves of his barn. How could we use this beautiful piece of wood? Then we noticed a bundle of salvaged table and chair legs which Ray had been collecting, dusty, and chipped...perfect for a unique bench. The tray top table created a pedestal which completed the composition. ”

- Kate Kelley

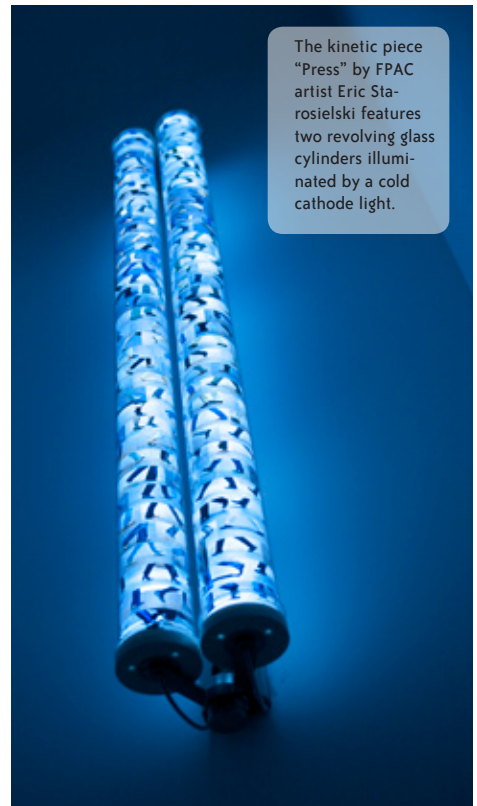




The bathroom features Analog wallpaper by Aimée Wilder.



Stair riser graphics are by the Boston graphic design company Proverb and installed by WB Incorporated.



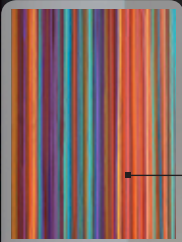
The kinetic piece "Press" by FPAC artist Eric Starosielski features two revolving glass cylinders illuminated by a cold cathode light.

## Powder Room & Stairway

The smallest rooms present major opportunities for splash. The powder room, with its retro silver-and-black boombox wallpaper, and the streamlined staircase with custom graphics, prove that bigger isn't always better.

“Lucy [of Lucia Lighting & Design] was a little worried about using unadorned fluorescent fixtures in the bathroom, but we love their edginess.” - Christine Rankin





A second painting from John Guthrie's "Drips" series provides a punch of color.



Lucia Lighting & Design installed this exquisite Waterford Ardmore Twelve Arm chandelier.



## Master Bedroom & Bath

Fit for a silver screen star, the bedroom drips with glamour day and night, mixing the refined—a bronze-framed Italian bed from the Morson Collection—with the unprocessed, like this rough-hewn side table from 60 Nobscot. Hacin's team added high gloss paint in playful pink to the ceiling and an exquisite needlepoint rug to create an eccentric dreamscape. We dream of bathing below the hand-blown glass bubble mobile, made for the Concept Home by Bel Vetro.

“When we started this project there were a lot of words thrown around for inspiration: personalize, reuse, interact, recycle, contrast. We want people to actively participate in their surroundings by altering, mixing, and having a sense of humor. Take what you have and make it new again. The final space should be one that asks people to approach, discuss, laugh, question, and discover.”

-Jennifer Clapp



An antique needle-point carpet from Dover Rug is fresh again when paired with modern elements such as the cream lacquer side table from the Morson Collection.

The sculptural bed looks great from every angle so the design team turned it into a centerpiece, wrapping it with a luscious fur throw, also from the Morson Collection.



This hand-blown glass bubble installation was created by local company Bel Vetro, and is available through Lucia Lighting & Design.



Winston Flowers installed a living wall in the master bathroom that can survive for days in high humidity conditions.

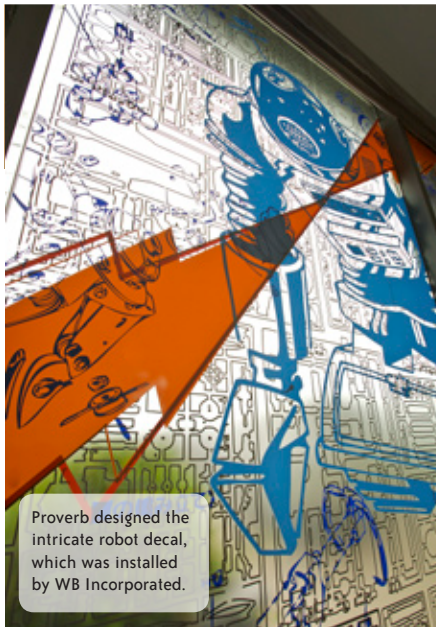


Caged sconces, designed for outdoor use, are from Lucia Lighting & Design.

The bright, playful puzzle carpet is a custom Dover Rug piece.

Vessel provided the bean bag chair and whimsical sock dolls.

Ligne Roset's aluminum trundle bed is perfect for playdates and sleepovers.



Proverb designed the intricate robot decal, which was installed by WB Incorporated.

## Second Bedroom

Hacin's team used custom-designed window graphics, comfy chairs, and bright colors to create a stimulating, thoughtful space for one lucky kid. They found the funky robot wallpaper by New York artist Aimée Wilder at this spring's International Contemporary Furniture Fair. Above all presides Albert Einstein, another basement find. Our favorite detail? The car catalog mural over the bed.





“While working on the Concept Home, my parents happened to send me, unannounced, boxes of things I’d asked them to save from the family home that had recently sold, including my collection of 1970’s car catalogs. My parents had actually driven me from dealership to dealership when I was 11 years old to get these catalogs. More than the cars, I was seduced by the graphics of advertising—the parchment paper and the embossed logos. I think as a collection, they’re very engaging.”

-David Hacin

Hacin’s Miniature Schnauzer Oscar sits atop a metallic Togo chair from Ligne Roset.



On the upper terrace, Winston Flowers designed a low maintenance xeriscape garden, swapping some pavers with LiveRoof green modules.

## Patios

The team had two beautiful outdoor spaces to work with—a small patio adjacent to the second bedroom, and a large, L-shaped space on the main level. Hacin collaborated with Winston Flowers to create three lush sitting areas, plus a completely edible garden. Fresh mint, anyone?



The outdoor dining area features a table from Design Within Reach and a lace runner by Teroforma from Lekker.

“The bench/planters, dedicated organic garden, and vintage pool furniture work seamlessly with our old-meets-new, functional aesthetic.”

-Kate Kelley

Proverb's multi-layered, plastic model-inspired decal for the boy's room comes alive at night, enhanced by a sheer orange shade by Finelines.

Vintage pool furniture from Machine Age gives the terrace a decidedly South Beach feel.

The plantings on the lower terrace create bold patterns of color and texture in planters from Winston's Domani Zinc collection.

